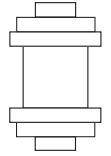
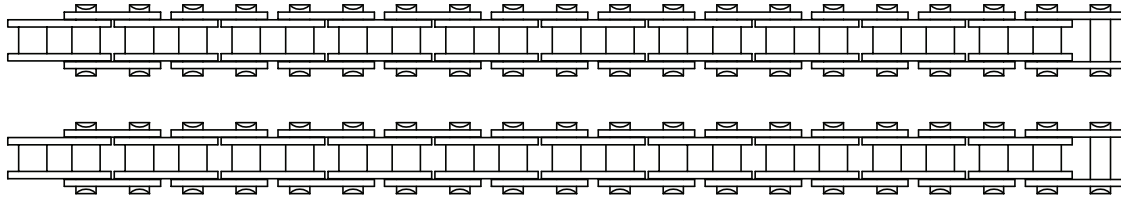


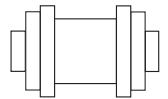
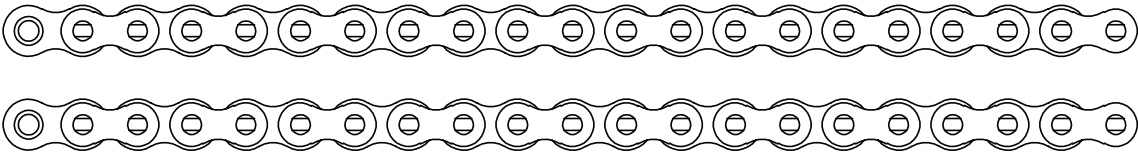


## MTO REQUEST SHEET

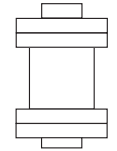
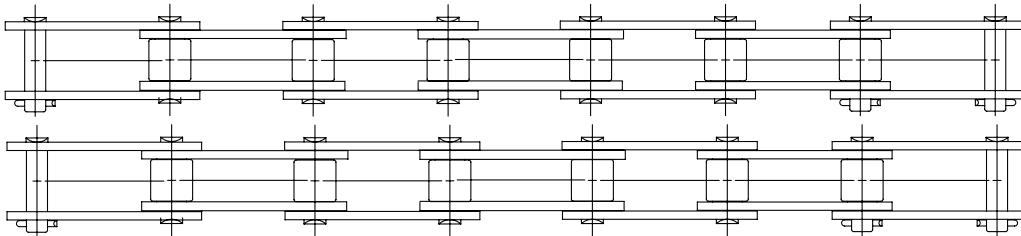
Single Pitch  
Top View



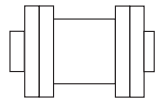
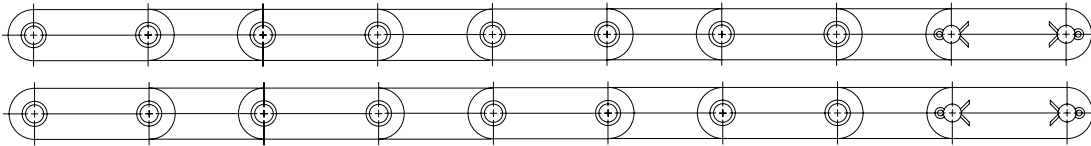
Single Pitch  
Front View



Double Pitch  
Top View



Double Pitch  
Front View



Circle one material/finish:

Carbon Steel, Nickel-Plated, Diamond Chain Anti-Corrosion (ACE<sup>®</sup>) Plated Carbon Steel, Stainless Steel Series – AP, 300, 400, 600

Chain Size \_\_\_\_\_

Attachment Type \_\_\_\_\_

Attachment Cycle \_\_\_\_\_

Chain Length (Pitches) \_\_\_\_\_

No. of chains in a set \_\_\_\_\_

Matching Class I or II \_\_\_\_\_

Company Name \_\_\_\_\_

Your Name \_\_\_\_\_

Phone \_\_\_\_\_

Fax \_\_\_\_\_

### Directions:

**1. Select desired material or finish. If choosing stainless steel, be sure to specify which series.**

**2. Select chain size, type of attachment, and attachment cycle.**

**3. Select chain length, number of chains in your set, and which matching class is preferred.**

**4. Fill in contact information.**

**5. Scan and email to a Diamond Chain customer service representative at [custsvc@diamondchain.com](mailto:custsvc@diamondchain.com) or fax to 317-613-2243.**

**You may also send this to your Diamond Chain sales representative.**

