

# SAPPHIRE<sup>®</sup>

DIAMOND CHAIN COMPANY



SAPPHIRE PRODUCT GUIDE



## TABLE OF CONTENTS

ISO/British Standard Series Chain	4
ASME/ANSI Series Chain	5
Heavy Series Chain	6
Non-Standard Series Chain	6
Specialty Application Chain	6-8
Double-Pitch Roller Chain	9
Pitches to Meters Conversion Table	10-11

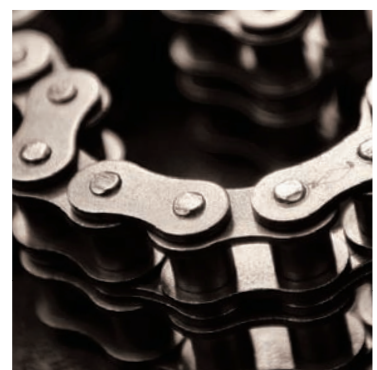


*Every Calling is Great, When Greatly Pursued.*

OLIVER WENDELL HOLMES

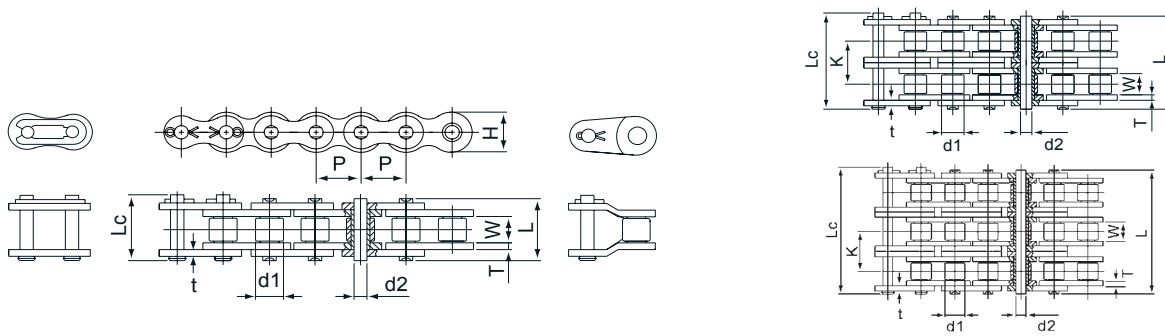


At the Diamond Chain Company, the calling to design and manufacture the world's highest-performing roller chain is greatly pursued every day by teams of passionate technical experts who have made your success their life's work. It's that intensity of focus that some of the world's greatest inventors trusted to provide the drive chains they needed to transform the world. From the Wright Brothers, to Henry Ford, to the global leaders of our time, Diamond® chain is the roller chain most trusted to perform, when performance matters most.



# ISO / BRITISH STANDARD SERIES CHAIN

Sapphire ISO/British Standard series chain is manufactured to the International Standards Organization metric dimensions (ISO 606), British Standard (BS 228), and DIN 8187.



Dimensions in mm

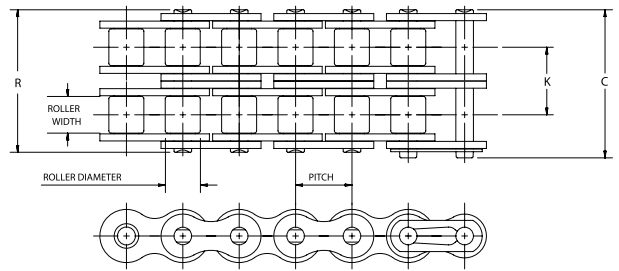
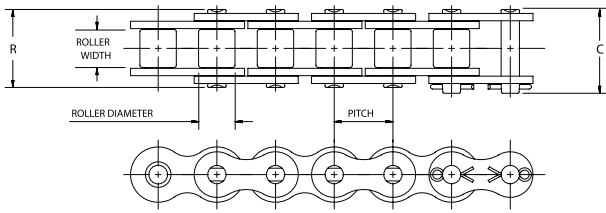
ISO / British Standard	Pitch P mm	Roller Width W min mm	Roller Diameter d1 max mm	Pin Outer Diameter d2 max mm	Inner Link Plate Thickness T mm	Outer Link Plate Thickness t mm	Pin Length Lc max mm	Pin Length L max mm	K mm	KG Per M	Average Tensile Strength N
05B-1	8.467	2.997	5.004	2.311	0.838	0.838	11.709	8.611	....	0.22	4893
*06B-1	9.525	5.715	6.350	3.277	1.270	0.991	16.789	13.487	....	0.45	8896
*06B-2	9.525	5.715	6.350	3.277	1.270	0.991	27.102	23.800	10.236	0.80	16903
08B-1	12.700	7.747	8.509	4.445	1.524	1.524	20.904	16.993	....	0.74	17793
08B-2	12.700	7.747	8.509	4.445	1.524	1.524	34.900	30.988	13.919	1.40	31138
08B-3	12.700	7.747	8.509	4.445	1.524	1.524	46.203	44.501	13.919	1.99	44482
10B-1	15.875	9.652	10.160	5.080	1.524	1.524	23.698	19.609	....	0.95	22241
10B-2	15.875	9.652	10.160	5.080	1.524	1.524	40.310	36.195	16.586	1.88	44482
10B-3	15.875	9.652	10.160	5.080	1.524	1.524	54.000	52.121	16.586	2.80	66723
12B-1	19.050	11.684	12.065	5.715	1.803	1.803	27.305	22.708	....	1.19	28913
12B-2	19.050	11.684	12.065	5.715	1.803	1.803	46.812	42.189	19.456	2.34	57827
12B-3	19.050	11.684	12.065	5.715	1.803	1.803	63.195	61.214	19.456	3.79	86740
16B-1	25.400	17.018	15.875	8.280	3.988	3.200	38.887	33.503	....	2.72	60051
16B-2	25.400	17.018	15.875	8.280	3.988	3.200	73.406	67.996	32.004	5.37	106757
16B-3	25.400	17.018	15.875	8.280	3.988	3.200	101.702	99.720	32.004	7.98	160136
20B-1	31.750	19.558	19.050	10.185	4.699	4.699	49.301	43.205	....	3.88	93413
20B-2	31.750	19.558	19.050	10.185	4.699	4.699	85.801	79.705	36.449	7.66	169032
20B-3	31.750	19.558	19.050	10.185	4.699	4.699	116.205	113.081	36.449	11.46	249100
24B-1	38.100	25.400	25.400	14.630	6.299	6.299	59.995	53.391	....	7.07	160136
24B-2	38.100	25.400	25.400	14.630	6.299	6.299	108.407	101.803	48.362	13.97	280238
24B-3	38.100	25.400	25.400	14.630	6.299	6.299	154.889	150.165	48.362	21.76	424805
28B-1	44.450	27.940	27.940	15.900	7.798	7.798	72.390	65.024	....	9.45	200170
28B-2	44.450	27.940	27.940	15.900	7.798	7.798	131.394	124.003	59.538	18.80	360306
28B-3	44.450	27.940	27.940	15.900	7.798	7.798	189.052	184.048	59.538	28.20	529338
32B-1	50.800	30.988	29.210	17.805	7.290	7.290	75.184	67.310	....	10.25	249100
32B-2	50.800	30.988	29.210	17.805	7.290	7.290	133.909	125.984	58.547	20.11	449270
32B-3	50.800	30.988	29.210	17.805	7.290	7.290	186.893	181.305	58.547	29.91	671681
40B-1	63.500	38.100	48.260	22.885	8.788	8.788	92.608	82.601	....	16.35	355858
40B-2	63.500	38.100	48.260	22.885	8.788	8.788	164.008	154.000	72.288	32.00	631647
40B-3	63.500	38.100	48.260	22.885	8.788	8.788	228.956	223.164	72.288	47.76	949695

\* Straight Side Bar.

# ASME / ANSI SERIES CHAIN

## SINGLE AND MULTI-STRAND

Sapphire standard series chains are built to ASME/ANSI B29.1 standards.



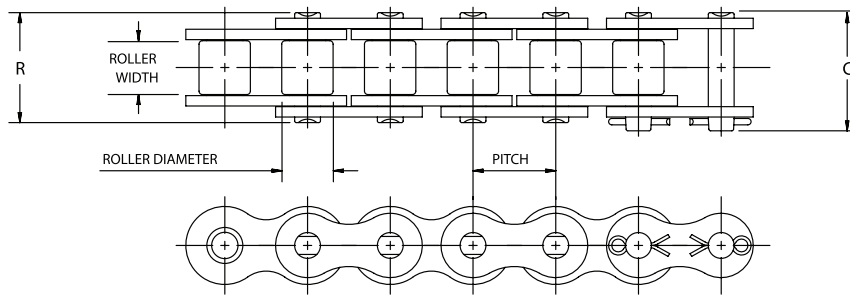
Dimensions in mm

ASME/ANSI Number	Pitch mm	Roller Width mm	Roller Diameter mm	Pin Diameter mm	Link Plate Thickness mm	C mm	R mm	K mm	KG Per M	Minimum Tensile Strength N
25	6.35	3.18	3.30 *	2.29	0.76	9.40	8.64	....	0.13	3470
35	9.53	4.76	5.08 *	3.58	1.27	14.22	12.70	....	0.31	7829
35-2	9.53	4.76	5.08 *	3.58	1.27	24.38	22.86	10.13	0.67	15658
40	12.70	7.94	7.92	3.96	1.52	18.29	17.02	....	0.61	13901
40-2	12.70	7.94	7.92	3.96	1.52	32.77	31.50	14.38	1.19	27801
40-3	12.70	7.94	7.92	3.96	1.52	46.99	45.72	14.38	1.79	41702
41	12.70	6.35	7.77	3.58	1.27	16.51	14.48	....	0.39	6672
50	15.88	9.53	10.16	5.08	2.03	22.61	21.08	....	1.01	21707
50-2	15.88	9.53	10.16	5.08	2.03	40.64	39.37	18.11	1.96	43415
50-3	15.88	9.53	10.16	5.08	2.03	58.67	57.40	18.11	2.95	65122
60	19.05	12.70	11.91	5.94	2.39	28.19	26.42	....	1.47	31271
60-2	19.05	12.70	11.91	5.94	2.39	51.05	49.28	22.78	2.90	62542
60-3	19.05	12.70	11.91	5.94	2.39	73.91	72.14	22.78	4.29	93813
80	25.40	15.88	15.88	7.92	3.18	36.58	33.53	....	2.57	55603
80-2	25.40	15.88	15.88	7.92	3.18	65.79	62.74	29.29	5.02	111206
100	31.75	19.05	19.05	9.53	3.96	43.94	40.89	....	3.74	86874
100-2	31.75	19.05	19.05	9.53	3.96	79.76	76.71	35.76	7.31	173748
120	38.10	25.40	22.23	11.10	4.75	54.36	50.80	....	5.49	125106
120-2	38.10	25.40	22.23	11.10	4.75	99.82	96.27	45.44	10.94	250212
140	44.45	25.40	25.40	12.70	5.56	58.67	54.36	....	7.44	170278
140-2	44.45	25.40	25.40	12.70	5.56	107.70	103.38	48.87	14.36	340556
160	50.80	31.75	28.58	14.27	6.35	69.34	64.52	....	9.72	222411
160-2	50.80	31.75	28.58	14.27	6.35	128.02	123.19	58.55	19.09	444822
180	57.15	35.72	35.71	17.45	7.14	80.01	73.15	....	13.48	281483
180-2	57.15	35.72	35.71	17.45	7.14	149.10	139.95	65.84	26.06	563487
200	63.50	38.10	39.67	19.84	7.92	87.38	79.25	....	15.85	347517
200-2	63.50	38.10	39.67	19.84	7.92	159.00	150.88	71.55	32.00	695035
240	76.20	47.63	47.63	23.80	9.53	103.12	94.49	....	24.41	500425

\*Chains are rollerless - dimension shown is bushing diameter.

## HEAVY SERIES CHAIN

Sapphire heavy series chains are built to ASME/ANSI B29.1 standards.



Dimensions in mm

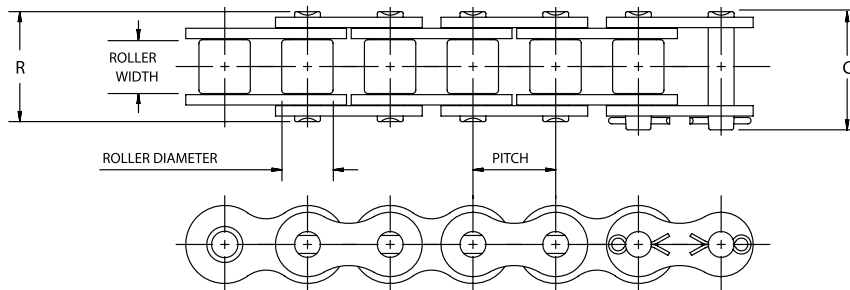
ASME/ANSI Number	Pitch mm	Roller Width mm	Roller Diameter mm	Pin Diameter mm	Link Plate Thickness mm	C mm	R mm	KG Per M	Minimum Tensile Strength N
50H	15.88	9.53	10.16	5.08	2.39	23.62	21.84	1.26	26182
60H	19.05	12.70	11.91	5.94	3.18	31.50	29.72	1.76	37810
80H	25.40	15.88	15.88	7.92	3.96	39.88	36.83	3.01	64499
100H	31.75	19.05	19.05	9.53	4.75	47.24	44.20	4.20	106757
120H	38.10	25.40	22.23	11.10	5.56	57.66	54.10	6.07	151240
140H	44.45	25.40	25.40	12.70	6.35	61.98	57.91	8.04	204618
160H	50.80	31.75	28.58	14.27	7.14	72.64	68.07	10.46	257997
200H	63.50	38.10	39.67	19.84	9.53	97.54	87.12	19.91	347517

NOTE: Heavy series chains are not necessarily stronger than standard series chains, but thicker link plate material provides an increase in fatigue resistance for drives subject to heavy shock.



## NON-STANDARD SERIES CHAIN

Sapphire non-standard series chains were built prior to the adoption of the ASME/ANSI standards and have non-standard dimensions.

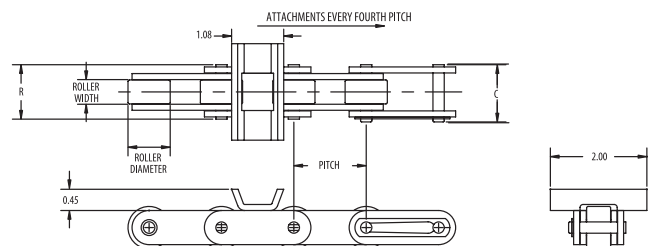


Dimensions in mm

Chain Number	Pitch mm	Roller Width mm	Roller Diameter mm	Pin Diameter mm	Link Plate Thickness mm	C mm	R mm	KG Per M	Minimum Tensile Strength N
65 x 1/8	12.70	3.18	7.77	3.58	1.02	11.68	10.67	0.27	9119

## SPECIALTY APPLICATION CHAIN

Sapphire specialty application series chain is available for a variety of applications including agriculture and motor sports.

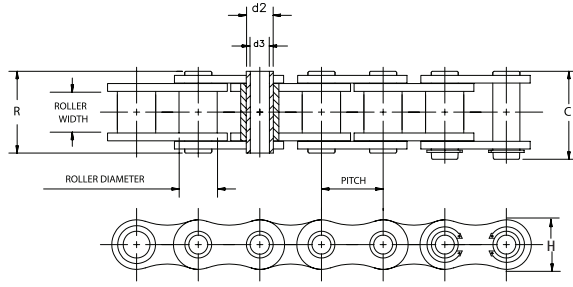


## COTTON MODULE CHAIN

Dimensions in mm

ASME/ANSI Number	Pitch mm	Roller Width mm	Roller Diameter mm	Pin Diameter mm	C mm	R mm	Link Plate Thickness mm	Minimum Tensile Strength N
C2062H CM	38.100	12.700	22.225	5.944	29.972	3.175	31.750	31271

# HOLLOW PIN

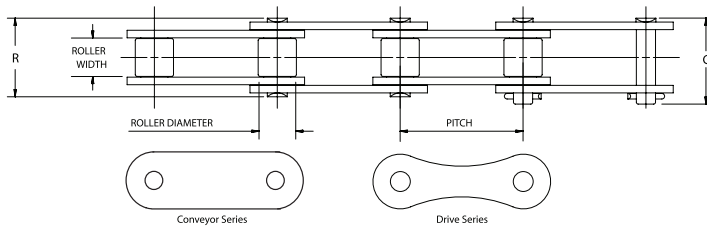


Dimensions in mm

ASME/ANSI Number	Pitch mm	Roller Width mm	Roller Diameter* mm	Pin Outer Diameter d2 mm	Pin Inner Diameter d3 mm	Link Plate Height H mm	Link Plate Thickness mm	C mm	R mm	KG Per M	Minimum Tensile Strength N
40HP	12.700	7.938	7.925	5.639	3.988	11.989	1.499	17.602	0.580	0.580	9808
50HP	15.875	9.525	10.160	7.036	5.131	15.088	2.007	21.895	0.948	0.948	18144
60HP	19.050	12.700	11.913	8.306	5.994	18.009	2.388	26.797	1.397	1.397	25497
80HP	25.400	15.875	15.875	11.405	8.052	24.003	3.200	33.807	2.525	2.525	49033
C2040HP	25.400	0.785	7.925	5.639	3.988	11.989	1.499	17.602	0.454	0.454	9808
C2050HP	31.750	0.940	10.160	7.214	5.131	15.011	2.007	21.895	0.744	0.744	18144
C2060HP	38.100	12.573	11.913	8.306	5.994	16.993	2.388	26.797	1.384	1.384	25497
C2062HP HP	38.100	12.573	22.225	8.306	5.994	16.993	3.200	26.797	1.935	1.935	25497
C2080HP	50.800	15.748	15.875	11.405	9.398	24.003	3.200	33.807	1.801	1.801	49033
C2082H HP	50.800	15.748	28.575	11.405	8.052	24.003	3.962	33.807	2.351	2.351	49033

\*Chain is rollerless - dimension shown is bushing diameter.

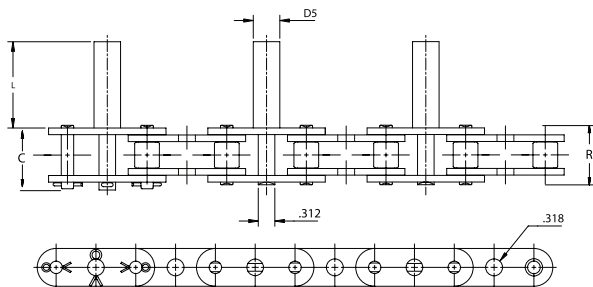
# AGRICULTURE CHAIN



Dimensions in mm

ASME/ANSI Number	Pitch mm	Roller Width mm	Roller Diameter mm	Pin Diameter mm	Link Plate Thickness mm	C mm	R mm	KG Per M	Average Tensile Strength N
Conveyor Series									
CA550	41.402	20.241	16.662	7.188	2.667	39.688	34.925	1.935	53935
CA555	41.402	12.700	16.662	7.188	3.175	31.750	30.163	1.801	58841
CA557	41.402	20.241	17.780	8.001	3.175	40.481	37.306	2.560	73551
CA620	42.012	25.003	17.678	7.188	3.175	46.831	41.672	2.336	58841
C2060H	38.100	12.700	11.913	5.969	3.175	31.750	30.163	1.563	43148
Drive Series									
A550	41.402	20.241	16.662	7.188	2.667	39.688	34.925	1.637	53935
A620	42.012	25.003	17.678	7.188	3.175	46.831	41.672	2.054	58841

# CITRUS CHAIN



Dimensions in mm

Type	D5	"L"
1	1/2	1.625
2	9/16	1.625

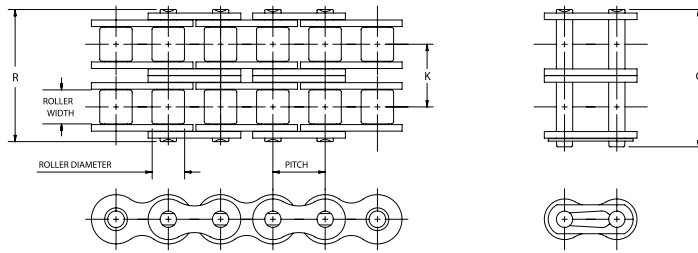
ASME/ANSI Number	Pitch mm	Roller Width mm	Roller Diameter mm	Pin Diameter mm	Link Plate Thickness mm	C mm	R mm	KG Per M*	Minimum Tensile Strength N
C2060H C	38.100	12.573	11.913	5.944	3.175	31.750	29.972	1.563	31271
C2060HSSC	38.100	12.573	11.913	5.944	3.175	31.750	29.972	1.533	25488

\*Approximate - weight will vary depending upon D5 pin required.

# SPECIALTY APPLICATION CHAIN

Sapphire specialty application series chain is available for a variety of applications including agriculture and motor sports.

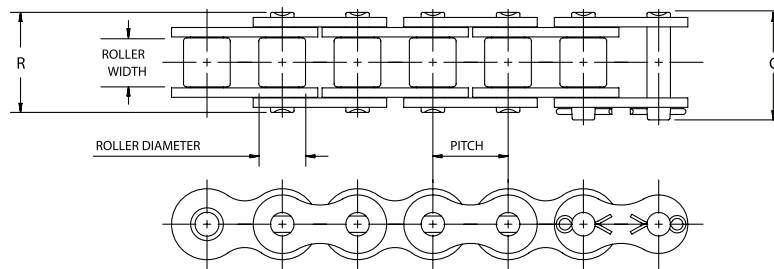
## COUPLING CHAIN



Dimensions in mm

ASME/ANSI Number	Pitch mm	Roller Width mm	Roller Diameter mm	C mm	R mm	K mm	Length Pitches	KG Per M
D4012	12.700	7.925	7.925	14.376	304.800	14.376	12	0.610
D4016	12.700	7.925	7.925	14.376	406.400	14.376	16	0.818
D5016	15.875	9.525	10.160	18.110	406.400	18.110	16	1.667
D5018	15.875	9.525	10.160	18.110	457.200	18.110	18	1.875
D6018	19.050	12.700	11.913	22.784	457.200	22.784	18	3.214
D6020	19.050	12.700	11.913	22.784	508.000	22.784	20	3.572
D6022	19.050	12.700	11.913	22.784	558.800	22.784	22	3.929
D8018	25.400	15.875	15.875	29.286	457.200	29.286	18	7.441
D8020	25.400	15.875	15.875	29.286	508.000	29.286	20	8.274
D10018	31.750	19.050	19.050	35.763	457.200	35.763	18	13.751
D10020	31.750	19.050	19.050	35.763	508.000	35.763	20	15.328
D12018	38.100	25.400	22.225	45.441	457.200	45.441	18	24.108
D12022	38.100	25.400	22.225	45.441	558.800	45.441	22	29.466

## POWERSPORTS & ATV CHAIN



Dimensions in mm

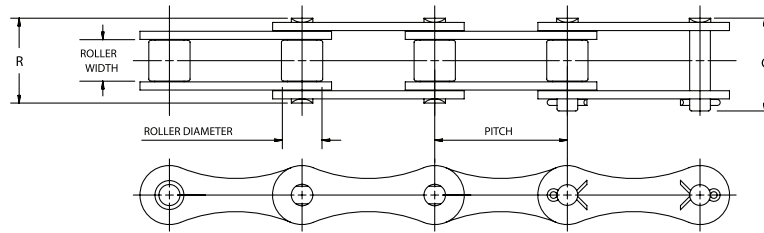
ASME/ANSI Number	Pitch mm	Roller Width mm	Roller Diameter mm	Pin Diameter mm	Link Plate Thickness mm	C mm	R mm	KG Per M	Average Tensile Strength N
219H	7.7724	5.0038	4.5974	2.9972	1.1938	....	11.9888	0.298	7651
219H BP	7.7724	5.0038	4.5974	2.9972	1.1938	....	11.9888	0.298	7651
420	12.7	6.35	7.7724	3.9624	1.524	1.66116	14.8082	0.402	18104
428	12.7	7.9375	8.509	4.4196	1.524	18.1102	16.7894	0.667	18683
428H	12.7	7.9375	8.509	4.4196	1.778	19.4564	18.8976	0.798	18683
520	15.875	6.35	10.16	5.08	2.032	19.558	18.034	0.939	29358
520H	15.875	6.35	10.16	5.08	2.3876	20.32	18.796	1.216	29358
530	15.875	15.875	10.16	5.08	2.032	22.606	21.082	1.058	29358
530H	15.875	15.875	10.16	5.08	2.3876	23.368	21.844	1.335	29358



## DOUBLE-PITCH ROLLER CHAIN

Sapphire double-pitch chains are built to ASME/ANSI B29.1 standards.

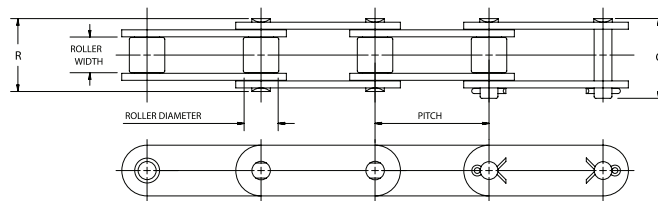
## POWER TRANSMISSION ROLLER CHAIN



Dimensions in mm

ASME/ANSI Number	Pitch mm	Roller Width mm	Roller Diameter mm	Pin Diameter mm	Link Plate Thickness mm	C mm	R mm	KG Per M	Minimum Tensile Strength N
2040	25.40	7.94	7.92	3.96	1.52	19.30	17.27	0.42	13901
2050	31.75	9.53	10.16	5.08	2.03	23.37	21.34	0.77	21707
2060	38.10	12.70	11.91	5.94	2.39	28.19	26.67	1.07	31271

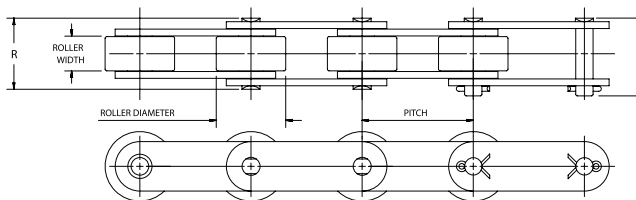
## CONVEYOR ROLLER CHAIN



## STANDARD DIAMETER ROLLER

Dimensions in mm

ASME/ANSI Number	Pitch mm	Roller Width mm	Roller Diameter mm	Pin Diameter mm	Link Plate Thickness mm	C mm	R mm	KG Per M	Minimum Tensile Strength N
C2040	25.40	7.94	7.92	3.96	1.52	19.30	17.27	0.51	13901
C2050	31.75	9.53	10.16	5.08	2.03	23.37	21.34	0.86	21707
C2060H	38.10	12.70	11.91	5.94	3.18	31.75	29.97	1.56	31271
C2080H	50.80	15.88	15.88	7.92	3.96	39.88	36.83	2.08	55603



## OVERSIZED DIAMETER ROLLER

Dimensions in mm

ASME/ANSI Number	Pitch mm	Roller Width mm	Roller Diameter mm	Pin Diameter mm	Link Plate Thickness mm	C mm	R mm	KG Per M	Minimum Tensile Strength N
C2042	25.40	7.94	15.88	3.96	1.52	19.30	17.27	0.74	13901
C2052	31.75	9.53	19.05	5.08	2.03	23.37	21.34	1.21	21707
C2062H	38.10	12.70	22.23	5.94	3.18	31.75	29.97	2.11	31271

# CHAIN LENGTH IN PITCHES TO METERS CONVERSION TABLE

No. of Pitches mm	Chain Pitch—mm												
	0.64	0.95	1.27	1.59	1.91	2.54	3.18	3.81	4.45	5.08	5.72	6.35	7.62
Chain Length—M													
1	0.05	0.08	0.10	0.13	0.15	0.20	0.25	0.33	0.38	0.43	0.48	0.53	0.64
2	0.10	0.15	0.20	0.25	0.41	0.43	0.53	0.64	0.74	0.84	0.97	1.07	1.27
3	0.15	0.23	0.33	0.41	0.25	0.64	0.79	0.97	1.12	1.27	1.42	1.60	1.91
4	0.20	0.33	0.43	0.53	0.64	0.84	1.07	1.27	1.47	1.70	1.91	2.11	2.54
5	0.25	0.41	0.53	0.66	0.79	1.07	1.32	1.60	1.85	2.11	2.39	2.64	3.18
6	0.33	0.48	0.64	0.79	0.97	1.27	1.60	1.91	2.24	2.54	2.87	3.18	3.81
7	0.38	0.56	0.74	0.91	1.12	1.47	1.85	2.24	2.59	2.97	3.33	3.71	4.45
8	0.43	0.64	0.84	1.07	1.27	1.70	2.11	2.54	2.97	3.38	3.81	4.24	5.08
9	0.48	0.71	0.97	1.19	1.42	1.91	2.39	2.87	3.33	3.81	4.29	4.78	5.72
10	0.53	0.79	1.07	1.32	1.60	2.11	2.64	3.18	3.71	4.24	4.78	5.28	6.35
11	0.58	0.86	1.17	1.27	1.75	2.34	2.92	3.51	4.06	4.65	5.23	5.82	6.99
12	0.64	0.97	1.27	1.60	1.91	2.54	3.18	3.81	4.45	5.08	5.72	6.35	7.62
13	0.69	1.04	1.37	1.73	2.06	2.74	3.43	4.14	4.83	5.51	6.20	6.88	8.26
14	0.74	1.12	1.47	1.85	2.24	2.97	3.71	4.45	5.18	5.92	6.68	7.42	8.89
15	0.79	1.19	1.60	1.98	2.39	3.18	3.96	4.78	5.56	6.35	7.14	7.95	9.53
16	0.84	1.27	1.70	2.11	2.54	3.38	4.24	5.08	5.92	6.78	7.62	8.46	10.16
17	0.89	1.35	1.80	2.26	2.69	3.61	4.50	5.41	6.30	7.19	8.10	8.99	10.80
18	0.97	1.42	1.91	2.39	2.87	3.81	4.78	5.72	6.68	7.62	8.59	9.53	11.43
19	1.02	1.50	2.01	2.51	3.02	4.01	5.03	6.05	7.04	8.05	9.04	10.06	12.07
20	1.07	1.60	2.11	2.64	3.18	4.24	5.28	6.35	7.42	8.46	9.53	10.59	12.70
21	1.12	1.68	2.24	2.77	3.33	4.45	5.56	6.68	7.77	8.89	10.01	11.13	13.34
22	1.17	1.75	2.34	2.92	3.51	4.65	5.82	6.99	8.15	9.32	10.49	11.63	13.97
23	1.22	1.83	2.44	3.05	3.66	4.88	6.10	7.32	8.51	9.73	10.95	12.17	14.61
24	1.27	1.91	2.54	3.18	3.81	5.08	6.35	7.62	8.89	10.16	11.43	12.70	15.24
25	1.32	1.98	2.64	3.30	3.96	5.28	6.60	7.95	9.27	10.59	11.91	13.23	15.88
26	1.37	2.06	2.74	3.43	4.14	5.51	6.88	8.26	9.63	11.00	12.40	13.77	16.51
27	1.42	2.13	2.87	3.58	4.29	5.72	7.14	8.59	10.01	11.43	12.85	14.30	17.15
28	1.47	2.24	2.97	3.71	4.45	5.92	7.44	8.89	10.36	11.86	13.34	14.81	17.78
29	1.52	2.31	3.07	3.84	4.67	6.15	7.67	9.22	10.74	12.27	13.82	15.34	18.42
30	1.60	2.39	3.18	4.06	4.78	6.35	7.95	9.53	11.13	12.70	13.61	15.88	19.05
31	1.65	2.46	3.28	4.09	4.93	6.55	8.20	9.86	11.48	13.13	14.76	16.41	19.69
32	1.70	2.54	3.38	4.24	5.08	6.78	8.46	10.16	11.86	13.54	15.24	16.94	20.32
33	1.75	2.62	3.51	4.37	5.23	6.99	8.64	10.49	12.22	13.97	15.72	17.48	20.96
34	1.80	2.69	3.61	4.50	5.41	7.19	8.99	10.80	12.60	14.40	16.21	17.98	21.59
35	1.85	2.77	3.71	4.62	5.56	7.42	9.27	11.13	12.95	14.81	16.66	18.52	22.23
36	1.91	2.87	3.81	4.50	5.72	7.62	9.53	11.43	13.34	15.24	17.15	19.05	22.86
37	1.96	2.95	3.91	4.90	5.87	7.82	9.78	11.76	13.72	15.67	17.63	19.58	23.50
38	2.01	3.02	4.01	5.03	6.05	8.05	10.06	12.07	14.07	16.08	18.11	20.12	24.13
39	2.06	3.10	4.14	5.16	6.20	8.26	10.31	12.40	14.45	16.51	18.57	20.65	24.77
40	2.11	3.18	4.24	5.28	6.35	8.46	10.59	12.70	14.81	16.94	19.05	21.16	25.40
41	2.16	3.25	4.34	5.44	6.50	8.69	10.85	13.03	15.19	17.35	19.53	21.69	26.04
42	2.24	3.33	4.45	5.56	6.68	8.89	11.13	13.34	15.57	17.78	20.02	22.23	26.67
43	2.29	3.40	4.55	5.72	6.83	9.09	11.38	13.67	15.93	18.21	20.47	22.76	27.31
44	2.34	3.51	4.65	5.82	6.99	9.32	11.63	13.97	16.31	18.62	20.96	23.29	27.94
45	2.39	3.58	4.78	5.94	7.14	9.53	11.91	14.30	16.66	19.05	21.44	23.83	28.58
46	2.44	3.66	4.88	6.10	7.32	9.73	12.17	14.61	17.04	19.48	21.92	24.33	29.21
47	2.49	3.73	4.98	6.22	7.47	9.96	12.45	14.94	17.40	19.89	22.38	24.87	29.85
48	2.54	3.81	5.08	6.35	7.62	10.16	12.70	15.24	17.78	20.32	22.86	25.40	30.48
49	2.59	3.89	5.18	6.48	7.77	10.36	12.95	15.57	18.16	20.75	23.34	25.93	31.12
50	2.64	3.96	5.28	6.60	7.95	10.59	13.23	15.88	18.52	21.16	23.83	26.47	31.75

# CHAIN LENGTH IN PITCHES TO METERS CONVERSION TABLE

No. of Pitches mm	Chain Pitch—mm												
	0.64	0.95	1.27	1.59	1.91	2.54	3.18	3.81	4.45	5.08	5.72	6.35	7.62
Chain Length—M													
51	2.69	4.04	5.41	6.76	8.10	10.80	13.49	16.21	18.90	21.59	24.28	27.00	32.39
52	2.74	4.14	5.51	6.88	8.26	11.00	13.77	16.51	19.25	22.02	24.77	4.65	33.02
53	2.79	4.22	5.61	7.01	8.41	11.23	14.02	16.84	19.63	22.43	25.25	28.04	33.66
54	2.87	4.29	5.72	7.14	8.59	11.43	14.30	17.15	20.02	22.86	25.73	28.58	34.29
55	2.92	4.37	5.82	7.26	8.74	11.63	14.55	17.48	20.37	23.29	26.19	29.11	34.93
56	2.97	4.45	5.92	7.42	8.89	11.86	14.81	17.78	20.75	23.70	26.67	29.64	35.56
57	3.02	4.52	6.05	7.54	9.04	12.07	15.09	18.11	21.11	24.13	27.15	30.18	36.20
58	3.07	4.60	6.15	7.67	9.22	12.27	15.34	18.42	21.49	24.56	27.64	30.68	36.83
59	3.12	4.67	6.25	7.80	9.37	12.50	15.62	18.75	21.84	24.97	28.09	31.22	37.47
60	3.18	4.78	6.35	7.95	9.53	12.70	15.88	19.05	22.23	25.40	28.58	31.75	38.10
61	3.23	4.85	6.45	8.08	9.68	12.90	16.13	19.38	22.61	25.83	29.06	32.28	38.74
62	3.28	4.93	6.55	8.20	9.86	13.13	16.41	19.69	22.96	26.24	29.54	32.82	39.37
63	3.33	5.00	6.68	8.33	10.01	13.34	16.66	20.02	23.34	26.67	30.00	33.35	40.01
64	3.38	5.08	6.78	8.46	10.16	13.54	16.94	20.32	23.70	27.10	30.48	33.86	40.64
65	3.43	5.16	6.88	8.61	10.31	13.77	17.20	20.65	24.08	27.51	30.96	34.39	41.28
66	3.51	5.23	6.99	8.74	10.49	13.97	17.48	20.96	24.46	27.94	31.45	34.93	41.91
67	3.56	5.31	7.09	8.86	10.64	14.17	17.73	21.29	24.82	28.37	31.90	35.46	42.55
68	3.61	5.41	7.19	8.99	10.80	14.40	17.98	21.59	25.20	28.78	32.39	35.99	43.18
69	3.66	5.49	7.32	9.12	10.95	14.61	18.26	21.92	25.55	29.21	32.87	36.53	43.82
70	3.71	5.56	7.42	9.27	11.13	14.81	18.52	22.23	25.93	29.64	33.35	37.03	44.45
71	3.76	5.64	7.52	9.40	11.28	15.04	18.80	22.56	26.29	30.05	33.81	37.57	45.09
72	3.81	5.72	7.62	9.53	11.43	15.24	19.05	22.86	26.67	30.48	34.29	38.10	45.72
73	3.86	5.79	7.72	9.65	11.58	15.44	19.30	23.19	27.05	30.91	34.77	38.63	46.36
74	3.91	5.87	7.82	9.78	11.76	15.67	19.58	23.50	27.41	31.32	35.26	39.17	46.99
75	3.96	5.94	7.95	9.93	11.91	15.88	19.84	23.83	27.79	31.75	35.71	39.70	47.63
76	4.01	6.05	8.05	10.06	12.07	16.08	20.12	24.13	28.14	32.18	36.20	40.21	48.26
77	4.06	6.12	8.15	10.19	12.22	16.31	20.37	24.46	28.52	32.59	36.68	40.74	48.90
78	4.14	6.20	8.26	10.31	12.40	16.51	20.65	24.77	28.91	33.02	37.16	41.28	49.53
79	4.19	6.27	8.36	10.44	12.55	16.71	20.90	25.10	29.26	33.45	37.62	41.81	50.17
80	4.24	6.35	8.46	10.59	12.70	16.94	21.16	25.40	29.64	33.86	38.10	42.34	50.80
81	4.29	6.43	8.59	10.72	12.85	17.15	21.44	25.73	30.00	34.29	38.58	42.88	51.44
82	4.34	6.50	8.69	10.85	13.03	17.35	21.69	26.04	30.38	34.72	39.07	43.38	52.07
83	4.39	6.58	8.79	10.97	13.18	17.58	21.97	26.37	30.73	35.13	39.52	43.92	52.71
84	4.45	6.68	8.89	11.13	13.34	17.78	22.23	26.67	31.12	35.56	40.01	44.45	53.34
85	4.50	6.76	8.99	11.25	13.49	17.98	22.48	27.00	31.50	35.99	40.49	44.98	53.98
86	4.55	6.83	9.09	11.38	13.67	18.21	22.76	27.31	31.85	36.40	40.97	45.52	54.61
87	4.60	6.91	9.22	11.51	13.82	18.42	23.01	27.64	32.23	36.83	41.43	46.05	55.25
88	4.65	6.99	9.32	11.63	13.97	18.62	23.29	27.94	32.59	37.26	41.91	46.56	55.88
89	4.70	7.06	9.42	11.79	14.12	18.85	23.55	28.27	32.97	37.67	42.39	47.09	56.52
90	4.78	7.14	9.55	11.91	14.30	19.05	23.83	28.58	33.35	38.10	42.88	47.63	57.15
91	4.83	7.21	9.63	12.04	14.45	19.25	24.08	28.91	33.71	38.53	43.33	48.16	57.79
92	4.88	7.32	9.73	12.17	14.61	19.48	24.33	29.21	34.09	38.94	43.82	48.69	58.42
93	4.93	7.39	9.86	12.29	14.76	19.69	24.61	29.54	34.44	39.37	44.30	49.23	59.06
94	4.98	7.47	9.96	12.45	14.94	19.89	24.87	29.85	34.82	39.80	44.78	49.73	59.69
95	5.03	7.54	10.06	12.57	15.09	20.12	25.15	30.18	35.18	40.21	45.24	50.27	60.33
96	5.08	7.62	10.16	12.70	15.24	20.32	25.40	30.48	35.56	40.64	45.72	50.80	60.96
97	5.13	7.70	10.26	12.83	15.39	20.52	25.65	30.81	35.94	41.07	46.20	51.33	61.60
98	5.18	7.77	10.36	12.95	15.57	20.75	25.93	31.12	36.30	41.48	46.69	51.87	62.23
99	5.23	7.85	10.49	13.11	15.72	20.96	26.19	31.45	36.68	41.91	47.14	52.40	62.87
100	5.28	7.95	10.59	13.23	15.88	21.16	26.47	31.75	37.03	42.34	47.63	52.91	63.50

# DIAMOND® CHAIN COMPANY

## Americas

Corporate Headquarters  
402 Kentucky Avenue  
Indianapolis, Indiana 46225  
PH: 1-800 US CHAIN  
1-800-872-4246  
Fax: 1-317-613-2243

Dallas Service Center  
9120 Premier Row  
Dallas, Texas 75356  
PH: 1-877-453-9128  
Fax: 1-214-631-2374

Sacramento Service Center  
1331 Terminal St.  
West Sacramento, CA 95691  
PH: 1-877-453-9127  
Fax: 1-916-372-5801  
sales@diamondchain.com

Canada/Mexico  
PH: 1-317-638-6431  
www.diamondchain.com

## United Kingdom

Unit 7 – 9  
Blaydon Industrial Park  
Chainbridge Road  
Blaydon on Tyne  
NE21 5AB  
PH: +44-191-414-8822  
sales@diamondchain.co.uk  
www.diamondchain.co.uk

## Asia

Century Financial Tower, Unit 2005  
No. 1 Suhua Road, SIP, Suzhou  
Jiangsu Province, China 215021  
PH: +86 -512-6265-3075  
salescn@diamondchain.com

